

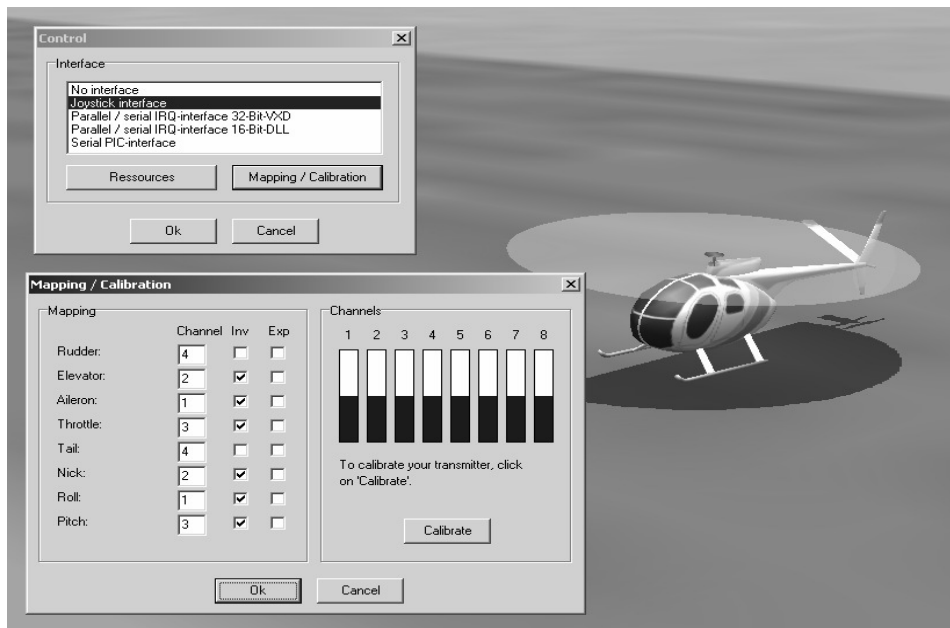
## Polaris 400CP Supplementary Instructions

When reading your model instruction manual please note the following points.

### **Using Your FMS Software**

It is advised that the frequency crystal is removed from the transmitter before operating your FMS software.

Please use the following settings when setting up your FMS software.



### **Training Skid Option**

Your Polaris 400CP has been supplied with a set of optional training skids to help the stability for new pilots whilst learning to fly. These should be assembled as below.

