

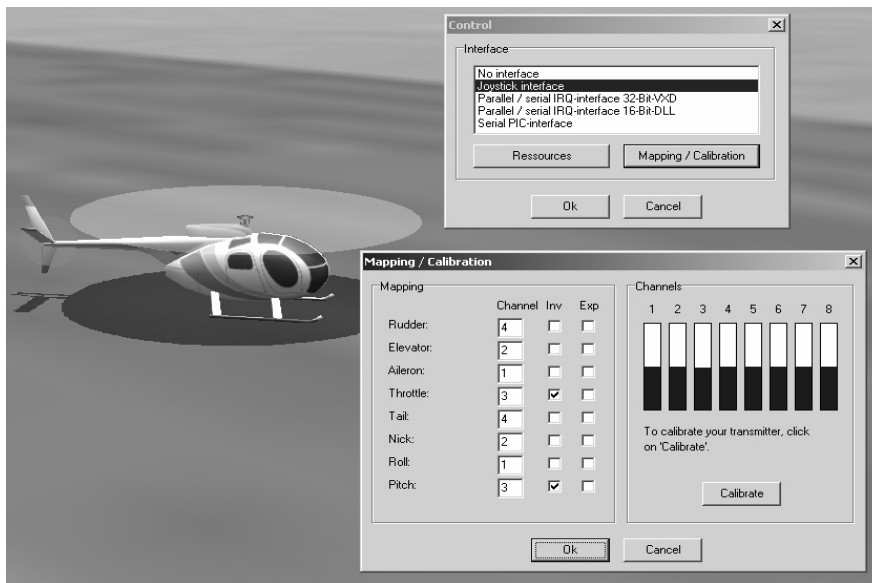
Pulsar 150 Supplementary Instructions

When reading your model instruction manual please note the following points.

Using Your FMS Software

It is advised that the frequency crystal is removed from the transmitter before operating your FMS software.

Please use the following settings when setting up your FMS software.



Training Skid Option

Your Pulsar 150 has been supplied with a set of optional training skids to help take-off and landing stability for new pilots whilst learning to fly. These should be assembled as below.

